

PART OF THE N.W. 1/4, SEC. 29, T.7N., R.1W., S.L.B. & M.
NORTH COUNTRY ROAD SUBDIVISION
 IN NORTH OGDEN CITY
 SCALE 1" = 60'

187

TAXING UNIT: 10

SEE PAGE 51-1

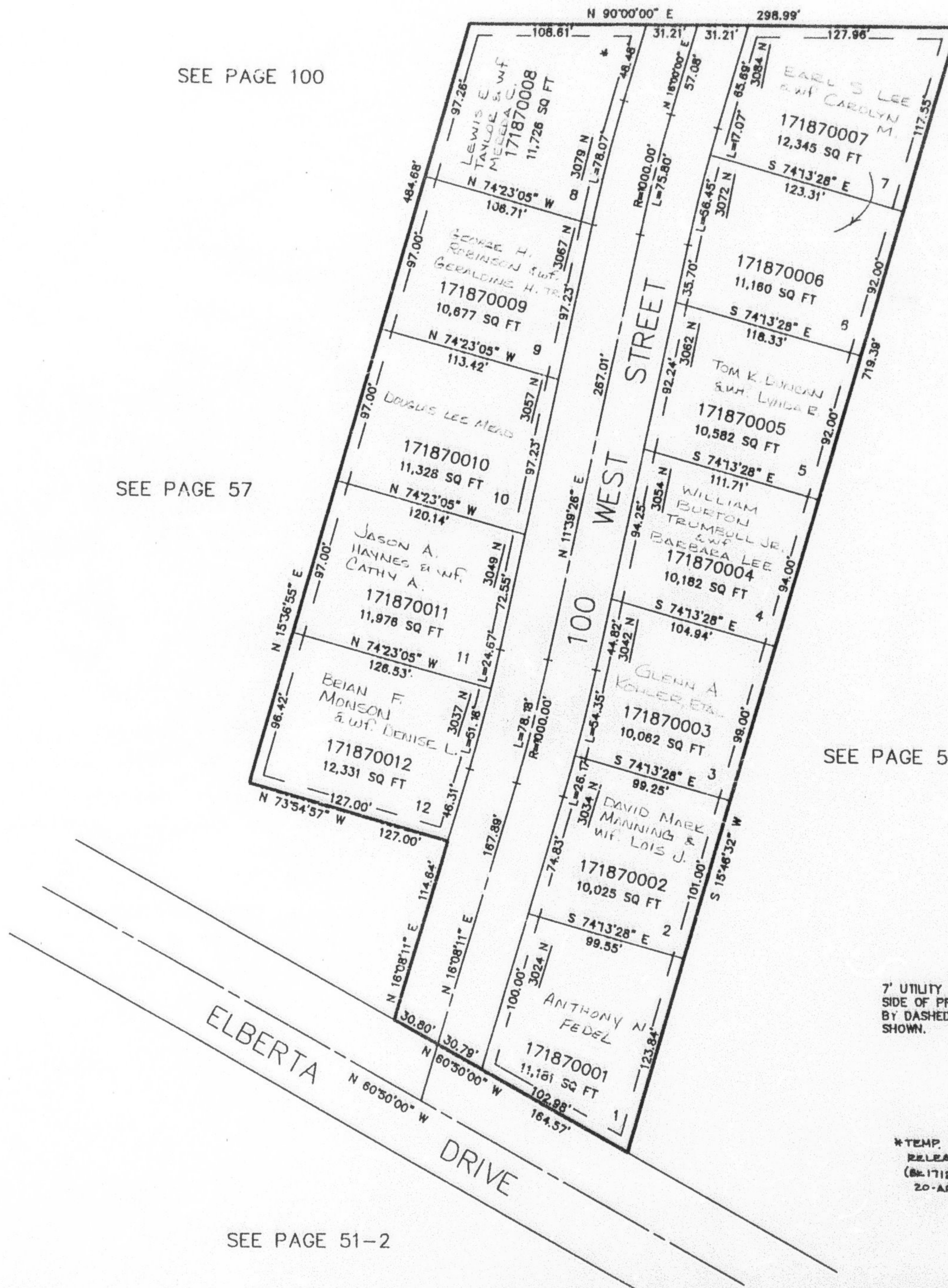
EXCEPT WHERE OTHERWISE SHOWN
 ALL LOTS BY: THOMAS J. HOLLER

SEE PAGE 100

SEE PAGE 54

SEE PAGE 57

SEE PAGE 55



7' UTILITY & DRAINAGE EASEMENTS EACH
 SIDE OF PROPERTY LINES AS INDICATED
 BY DASHED LINES EXCEPT AS OTHERWISE
 SHOWN.

FOR COMPLETE ENG DATA SEE
 ORIGINAL DEDICATION PLAT IN
 BOOK 38, PAGE 16 OF RECORDS.

*TEMP. CUL-DE-SAC
 RELEASED
 (EX-1712 PLS 583)
 20-APR-94

SEE PAGE 51-2